

Science Outreach Program (RockEdu) Mission: To provide inclusive, authentic, and supportive biomedical learning and research opportunities to *all members of the K-12 community* in a way that is dynamic and engaging, while keeping in mind cultural and social contexts.

EQUITABLE ACCESS

ensuring all groups are provided with equal opportunities for STEM enrichment & employment

INCLUSION

a process that encourages collaboration, flexibility, and fairness, and allows all students to participate to their fullest potential

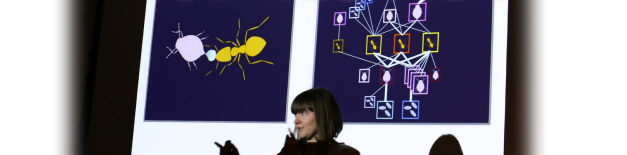
DIVERSITY

an inclusive cultivation of scientific talent by promoting scientific excellence across the entire social identity spectrum

RockEdu's newest work towards these goals: **Launching our Digital Initiative**

Teacher Resources

- Broad frameworks to shape how we think about certain concepts and topics
- Accurate, in-depth background reading materials
- Sample demos and classroom activities



1230 Science

Affordable, accessible school-based research projects for students to authentically engage with the research process

- Background information and literature for each model system presented at a high school level
- Flexible protocols and multimedia resources to successfully initiate and maintain a project system using everyday materials & a small budget
- Guidance on question development and project planning; templates for sharing results and discoveries
- Multimedia connections to scientists studying relevant fields

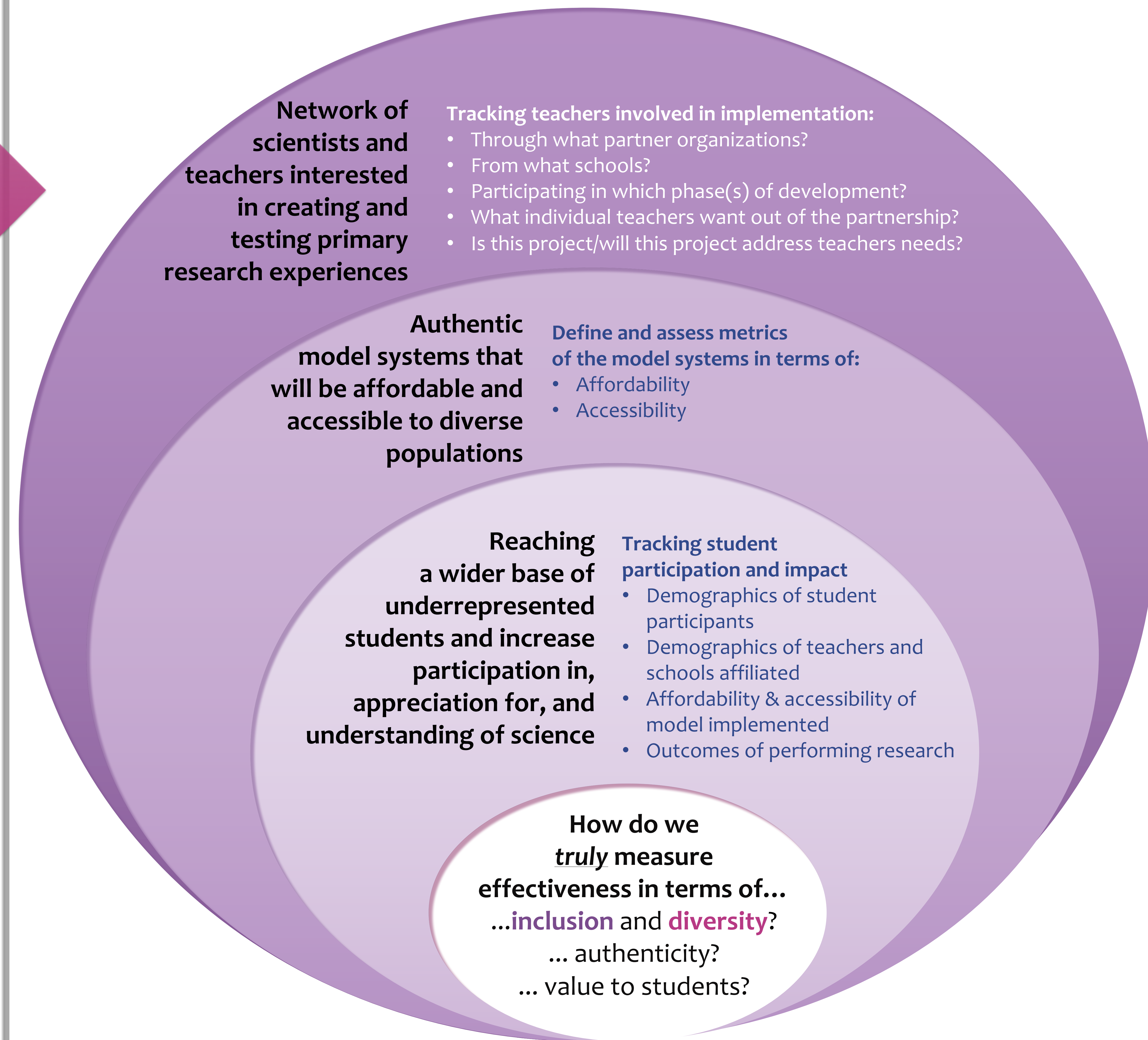
[Social Media]

- To humanize and contextualize science while highlighting diversity
- Scientists of New York #sciony
Facebook, Twitter, Instagram #RockEdu
Parts per Millions #ppms

Proposed Implementation of 1230 Science:



Proposed Goals & Metrics of 1230 Science:



Through science outreach we aim to instill a passion for learning STEM through equitable opportunities that promote diversity and inclusion for ALL students.



@RockEdu_ #RockEdu



Follow us at Rock Edu

www.rockefeller.edu/outreach