



The ELRC's Collaborative Approach to Evaluation

The Evaluation and Learning Research Center (ELRC) provides intellectual capital that drives effective proposal development and project enactment. Known for conducting rigorous research and evaluation, the ELRC maintains a portfolio of over 20 active projects, adds credibility and value to over 40 proposals each year, and consults with partners both on and off campus on a host of nascent stage projects. The ELRC:

- conducts original research that pushes the boundaries of our understanding of learning, workforce development and equity;
- supports research, education, and engagement projects through expertise in educational theory, evaluation, and project management;
- partners with both internal and external stakeholders to enhance accountability, visibility, and reputation.

ELRC Approach:

The ELRC collaborative approach to evaluation starts with a conversation early in proposal/project development to define, frame, and describe the project. Drawing on a portfolio of tools, ELRC works with partners to identify appropriate research and evaluation models and develop logical frameworks that inform ongoing project development/ implementation.

ELRC Roles:

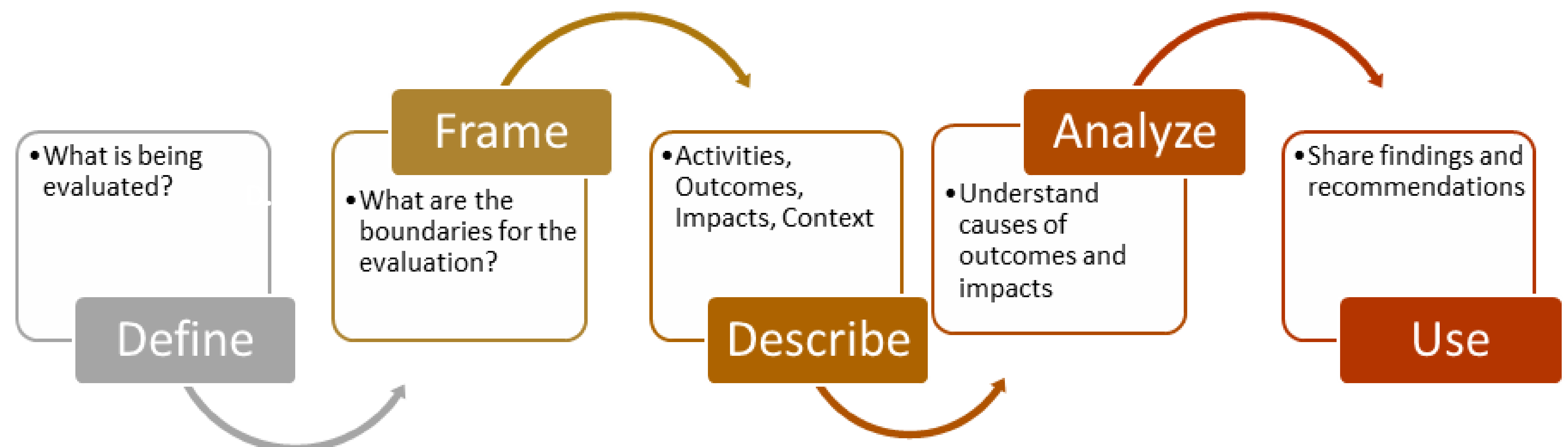
ELRC roles vary depending on the needs of a particular project. Common roles include:

- Critical Friend
- Research Collaborator
- Evaluation Capacity Building
- Evaluation Analysis
- Monitoring and Evaluation
- Formative/Summative/Program Evaluation

Contact:

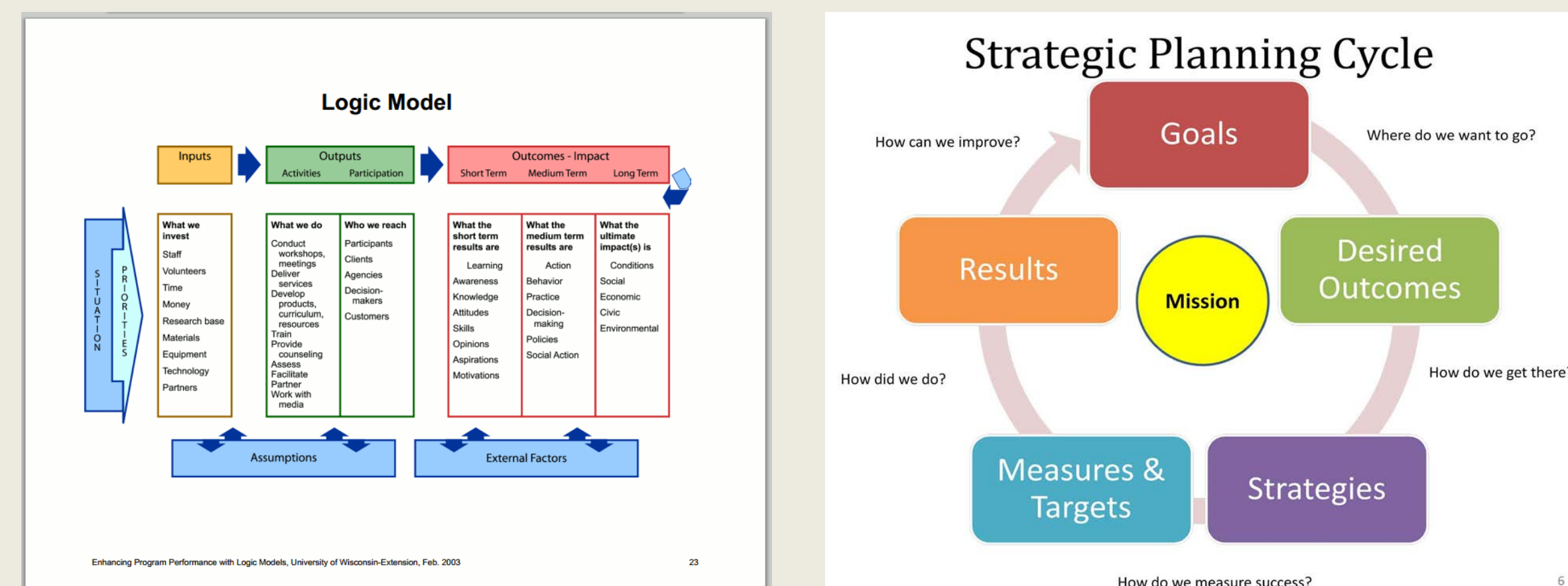
ELRC
 100 N. University Street
 West Lafayette, IN 47907-2098
 765-494-4555
learningcenter@purdue.edu
 ELRCenter.org

ELRC Evaluation Process



ELRC Expertise:

Logic Models/Strategic Planning



Theoretical Frameworks/Theories of Change
(Self-determination, Social Identity, Social/Cultural Capital, Cognitive Apprenticeship, Social Cognitive Career)

Qualitative Evaluation and Research Methods
(Focus group, Interview, Observation, Ethnography)

Quantitative Evaluation and Research Methods
(Sampling and Sample Design, Surveys, Modeling, WWCH)

Projects:

ELRC projects encompass the full range of educational research studies (foundational, early-stage or exploratory, design and development) and studies that evaluate the impact of educational interventions and strategies (efficacy, effectiveness, and scale-up). ELRC staff are also experienced in program (or external) evaluation that examines the effectiveness and efficiency of a program or project.

Funding:

NSF ♦ NIH ♦ USDA ♦ NIST ♦ DOE ♦ HRSA ♦
 CDC ♦ USAID ♦ HHMI ♦ Kresge Foundation
 ♦ Gates Foundation ♦ Lumina Foundation ♦
 Gardner Institute ♦ AAU ♦ APLU ♦ AAC&U