

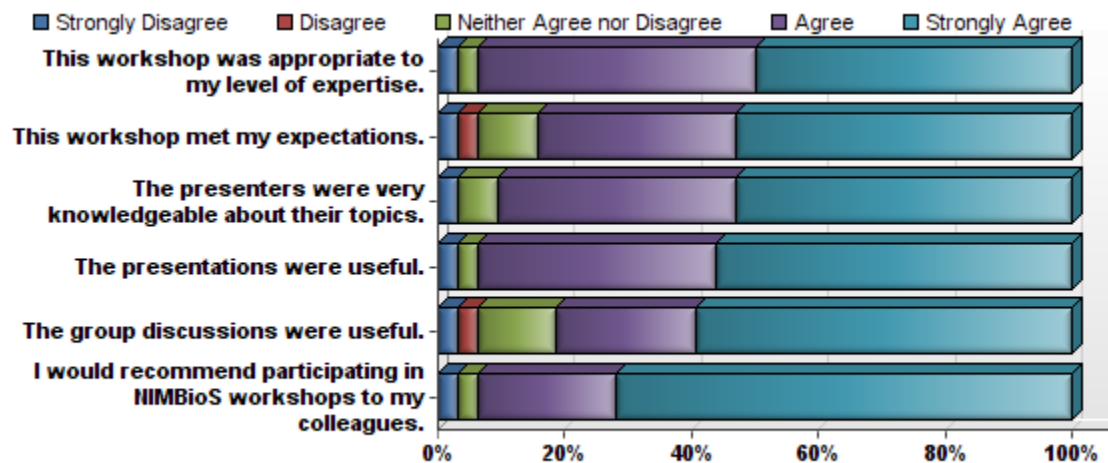


**Evaluation Summary Report**  
*Workshop: Modeling Contamination of  
Fresh Produce*

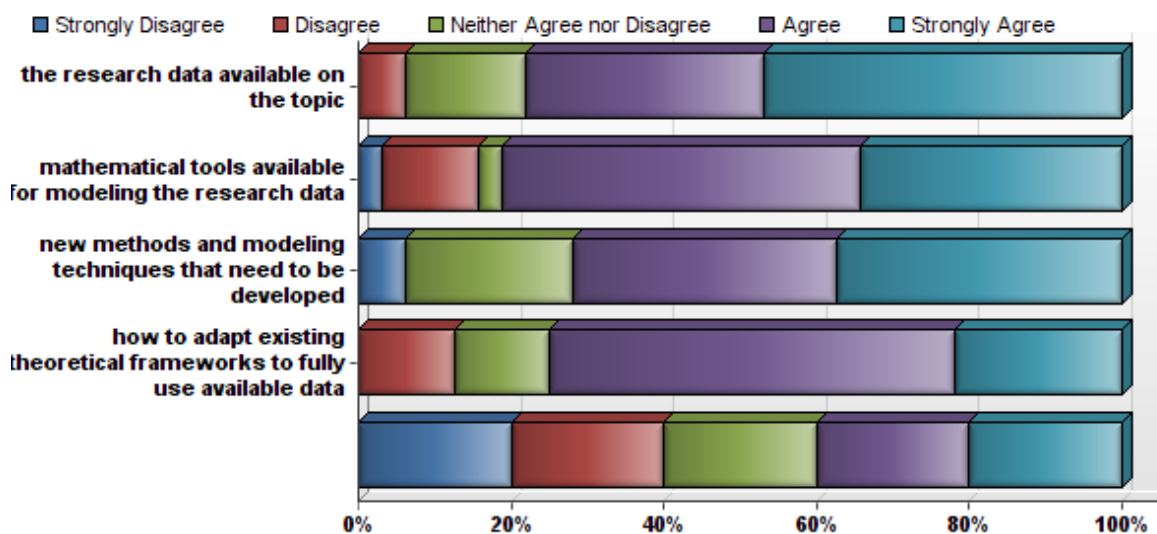
April 24-25, 2014

Pamela Bishop  
Evaluation Manager  
National Institute for Mathematical and Biological Synthesis  
June, 2014

1. Please check the appropriate box to indicate your level of agreement with the following statements about this workshop:



2. As a result of participating in this workshop, I have a better understanding of:



### 3. What do you feel was the most useful aspect of the workshop?

*Discussion and collaboration.*

*To learn the current state of research on the topic*

*Understanding about solving a real problem that I can contribute to*

*Communication among multidisciplinary scientists about the application of models*

*The discussion*

*Giving participants a clearer definition of the problem from the commercial standpoint*

*Knowledge exchange with experts from different research areas*

*Starting collaboration*

*The group discussions were really appreciated and useful for my understanding of my current research and future possible collaborations between the workshop participators.*

*Overview over an area that i knew only very little*

*Talks from mathematicians as well as researchers in food produce.*

*Interaction with experts on different disciplines*

*Discovering new ways to think about and analyze food safety issues in the produce industry.*

*The presence of industry and government representatives mixed with mathematicians was extremely valuable.*

*Meeting new people, exchanging experiences and the group discussion.*

*Melt of expertise and individuals that otherwise would be difficult to find in other avenues such as conferences.*

*To me, the most useful aspect of the workshop was a mix of ideas from people from various disciplines: Microbiologists, mathematical modelers, food industry representatives and PR actioners in the food industry, engineers etc.*

*Workshop discussion groups that were highly interdisciplinary were really useful.*

*Collaboration and sharing of ideas.*

*I am a mathematician; the most useful aspect of this workshop is that it brought the food processing researchers and industry persons in the workshop to present their methodology, issues they want to be solved by models.*

*The presentations and opportunities to meet others in different fields*

*The discussion within the different working groups where people from different disciplines were involved. We identified gaps that need further study and the development of mathematical models might help to obtain better conclusions.*

*Networking and exchange of ideas*

*Bringing experts from different disciplines*

*Making new connections, meeting researchers from other fields and planting the seeds of potential collaborations or at least an appreciation of models from other fields that might be useful*

*Hearing more details about the real situations we want to model.*

*Cross fertilization between Mathematicians/modelers and biologists. Produce risk assessment is an interdisciplinary effort. Up to now, applied mathematicians and engineers have not been brought to bear on providing solutions to the mechanistic modeling of processes that happen on the interface of the natural environment and fresh produce crops.*

*Networking building and position-paper development*

#### **4. What would you change about the workshop?**

*Probably nothing. Time was short but more time would not have been enough to make a difference. Off line discussion must follow.*

*Topic was too board in time allowed. However rather than more time a narrower scope would be advisable*

*Schedule between Tuesday and Thursday to facilitate traveling schedule*

*The workshop raised my research interest at disciplines other than my current research topics*

*More talks from junior researchers like postdocs to hear how they are approaching research challenges in the field.*

*Extend it to one more day, to allow more time for group work*

*The administration leading up to the conference was a bit disjointed. I had trouble using the on-line interface as I was not used to it.*

*Longer time for group discussions would be best.*

*Maybe, the workshop could be in more than 2 days.*

*I think the workshop met my expectations. The organizers did a wonderful job. Nothing needed to change.*

*I struggled a bit with the level of industry participation. It was critical for industry participation in order to identify the issues of importance to the industry and the data that exists that could be helpful for addressing the issue. However, I did fell at times like some of the industry participants had a very specific agenda and were not interested in anything that they deemed as "unimportant" (based on their own personal perspective).*

*More structure for the breakouts ability to interact more with the other groups*

*Maybe, it would be better to have more work done before attending the meeting. For instance, to make a list of papers very relevant to the topic and to guarantee that all of the participants have the adequate background on the different topics.*

*Be clearer about the final outcomes*

*Breakout sessions might have needed more structure*

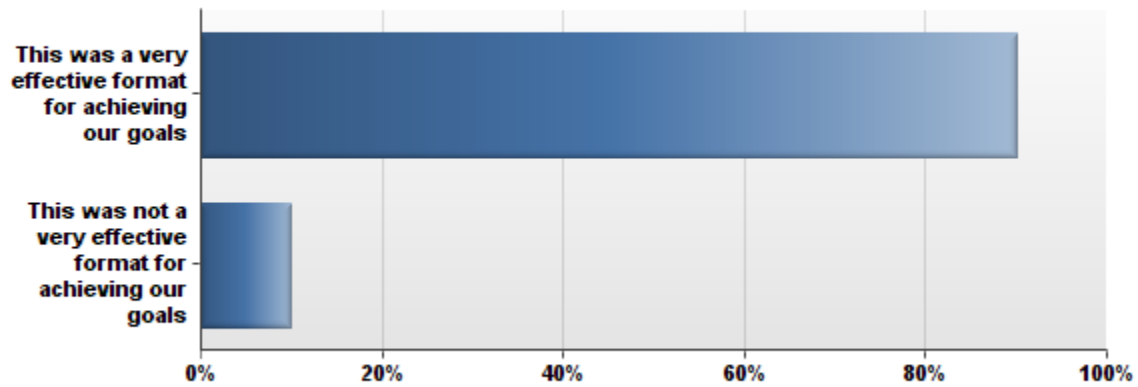
*Too many people trying to dominate the group discussions.*

*Make the workshop one day longer.*

*I was hoping to learn more about modeling expertise, but the focus was on food safety.*

*None, most appropriate.*

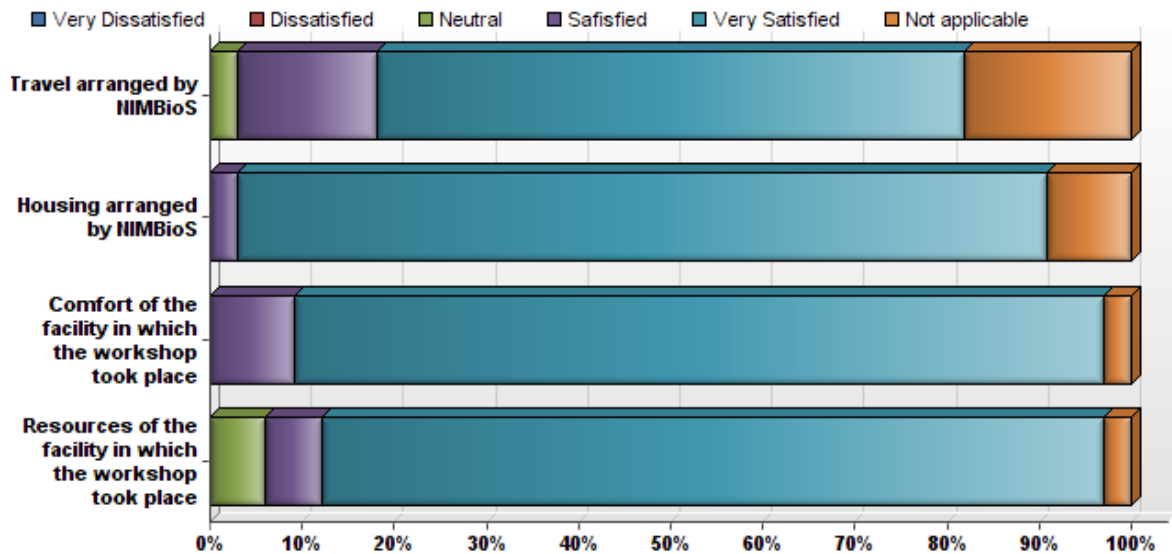
## 5. How do you feel about the format of the workshop?



## 6. The workshop format would have been more effective if:

No comments

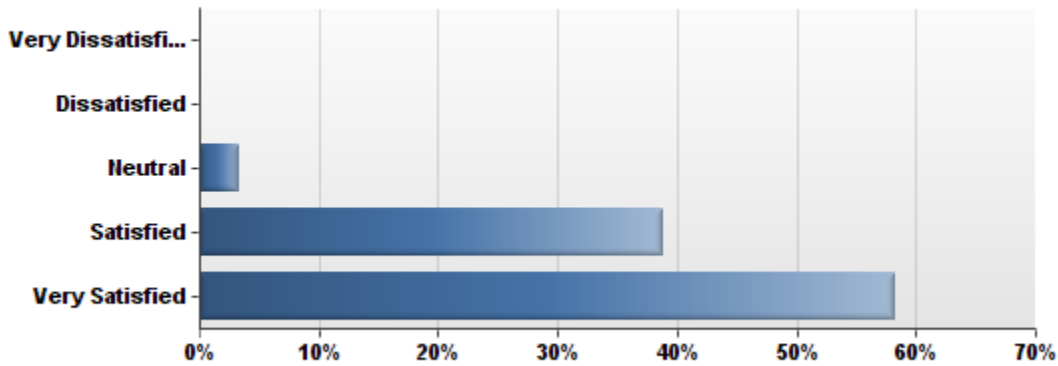
## 7. Please indicate your level of satisfaction with the workshop accommodations:



## 8. Comments about accommodations:

*My flight was delayed to a technical problem. As a result, I missed the last connecting flight to Knoxville. Dealing with United to be re-booked and put in a hotel and shuttle was an absolute nightmare. I ended up having 3 hours of sleep on Wednesday night and still missed a large portion of the morning talks due to their major glitch. I would recommend avoiding to book flights with connections, when the connection is the last flight out of the connecting airport. With today's airlines, it might be best avoided.*

**9. How satisfied were you with the opportunities provided during workshop presentations and discussions to ask questions and/or make comments?**



**10. Please indicate any suggestions you have for facilitating communication among participants during the workshop:**

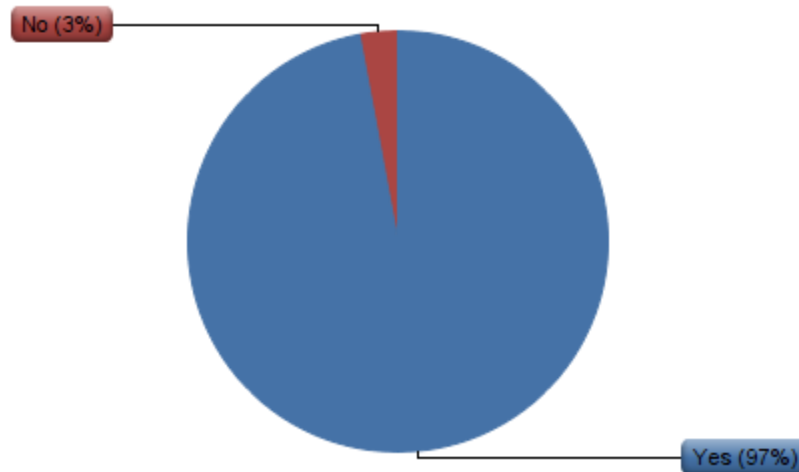
*The workshop had a fairly small group of people, and it wasn't difficult to communicate with any of them.*

*I suggest you to provide a kind of handout of the workshop, in which the content has the title, name of speaker and an abstract of the talk.*

*I suggest that a summary of the ideas gathered at the workshop should compile and be posted to all the participants after the workshop.*

*The workshop provided plenty of opportunity for networking. I wish there were more time..... however..... There will never be enough time, unless the workshop is extended another day.*

**11. Do you feel participating in the workshop helped you better understand the research going on in disciplines other than your own on the workshop's topic?**



**12. Comments:**

*The multidisciplinary research groups that were assembled helped a lot!*

*As a chemist and food scientist with some math skills, I had new horizon opened to go further. I see several potential collaborations developing.*

*We have already reached out to participants to collaborate*

*I am not a modeler so the workshop was very informative for me. It opened new horizons that I had previously barely glimpsed.*

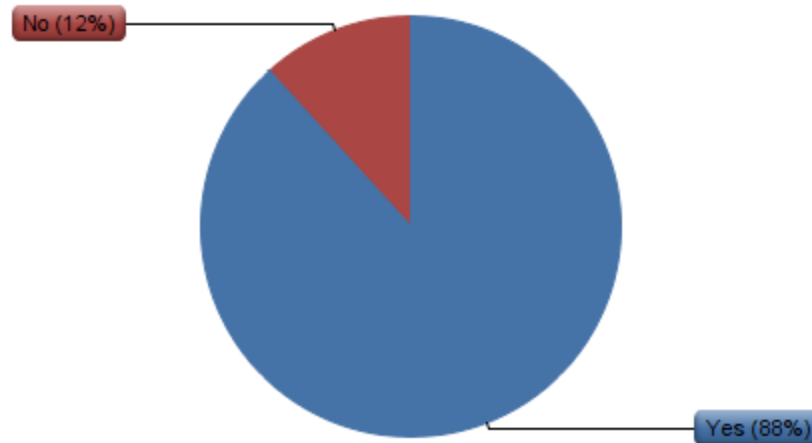
*This workshop was not only a research meeting about food contamination, but also a great opportunity to meet new people and know different research areas.*

*The workshop was an excellent educational experience. It introduced me to a new research field in a meaningful way.*

*Specially in the modelling*



**13. Do you feel the workshop made adequate progress toward finding a common language across disciplines for research on the workshop's topic?**



**14. Comments:**

*Good progress was made but there is more to do.*

*Not enough time to anything but skim the surface of the issues*

*I believe so, but only time will tell.*

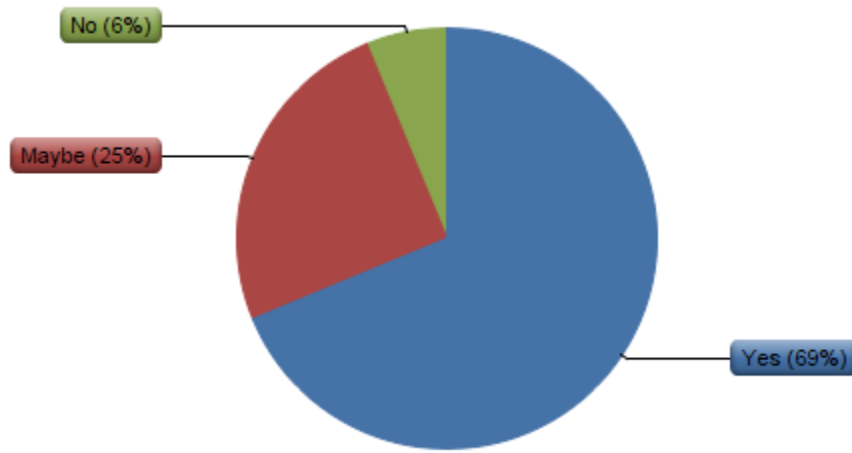
*I believe that the multidisciplinary effort to discuss about the workshop's topic was fundamental to progress toward finding a common language.*

*As a mathematical modeler, the workshop did an excellent job in defining the type of data required to conduct research in this new field from a modelling perspective.*

*Moderate - to yes*

*This workshop initiated a very important capacity building in an area that has now been identified as propriety research in a few federal agencies.*

**15. Do you feel that the exchange of ideas that took place during the workshop will influence your future research?**



**16. Comments:**

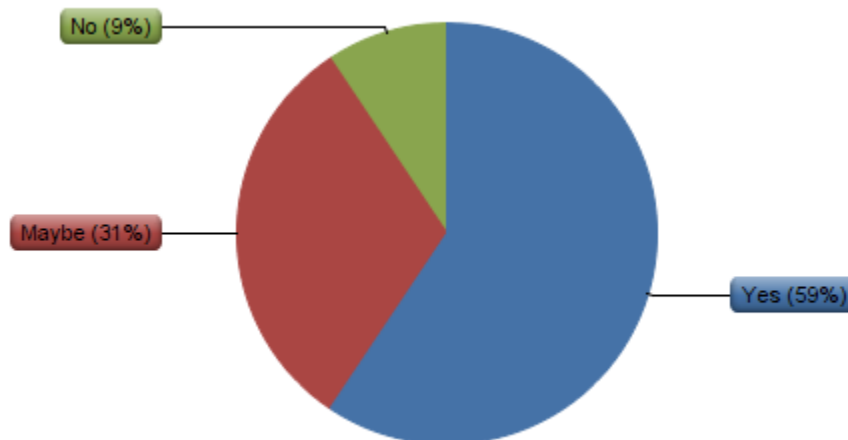
*I will probably not be involved in further research in this particular area.*

*Exchanging ideas always provide new ideas. Also, among those new ideas may arise a new solution to future researches?*

*Yes. I am making a submission today to my University to ask for a postdoctoral fellow post to work with me on mathematical modelling research in this area.*

*I would like for it to, but depends on future outreach efforts.*

**17. Did you develop plans for collaborative research with other workshop participants with whom you had not previously collaborated?**



**18. Comments:**

*But more plans still need to be made since I am not sure how many will have interest in my line of research in this area. More discussions are still underway taking into account the new information obtained from the workshop.*

*During this meeting I have contacted many new people. Therefore, this meeting was very productive in identifying new collaborators within my research topic but also, contacts involve in modelling. A new collaboration was already established with one of the participants. The collaboration consisted in sharing experimental data obtained in disinfection assays and to determine the possibilities for modelling. However, many other contacts have been initiated during this meeting, such as the contact with Partha Srinivasan, Assistant Professor at the Department of Mathematics in order to develop a model which might help to monitor all the parameters that determine the effectiveness of washing. I also had a very productive talk with Renata Ivanek-Miojevic regarding the statistical analysis needed to correlate microbial and climatic data.*

*But would like to.*

**19. Please use this space for any additional comments:**

*Thank you very much for this helpful workshop.*

*Great workshop! Sincere thanks for the invitation.*

*The workshop actually exceeded my expectations in terms of the quality of the presentations, the insights of the participants and the collegial atmosphere throughout the workshops and presentations. I was initially skeptical of the value of my potential input but I feel that I did make positive contributions and I certainly learned a lot.*

*Thank you very much for the opportunity to participate in this workshop! I hope to participate in other upcoming workshops or research meetings at NIMBioS!*

*Thanks for a great workshop. I hope to be back to NIMBioS sometime.*

*The Co-chairs/moderators of the workshop were excellent. Their enthusiasm for the subject fostered an inviting and collegial atmosphere, and encouraged the free exchange of ideas and opinions.*